

## RATIONALE

The treatment of patients with chronic myeloid leukemia (CML) deeply evolved during last years. In particular, the introduction of Tyrosine Kinase inhibitors (TKIs) allowed a chronicization of the disease.

Having reached the goal of survival almost equal to that of a control population without leukemia, the main questions regard the treatment of the small number of patients still resistant to therapy, the choice of firstline TKI according to the patient's profile and his primary hematologic objective, the long-term toxicity problems due to continuous TKI intake, the de-escalation of therapy based on the concept of minimal effective dose in state of the maximum tolerated dose, the need to increase the percentage of patients who can maintain a continuous remission even in the absence of TKI therapy (Treatment Free Remission - TFR), and the quality of life of patients.

The meeting, is also devoted to the improvements of the Ph-negative myeloproliferative disorders (MPN), such as the Polycitemia Vera, the Thrombocytomia and moreover the Myelofibrosis.

The most influential and distinguished Italian and International Hematologists will discuss on the most important open questions and projects regarding the CML and the Ph-neg MPN.

## FACULTY

Jane Apperley (London)

Simona Bernardi (Brescia)

Monica Bocchia (Siena)

Massimiliano Bonifacio (Verona)

Massimo Breccia (Roma)

Fausto Castagnetti (Bologna)

Daniela Cilloni (Torino)

Mirko Farina (Brescia)

Carmen Fava (Torino)

Nico Gagelmann (Hamburg)

Sara Galimberti (Pisa)

Carlo Gambacorti Passerini (Monza)

Enrico Gottardi (Torino)

Antonella Gozzini (Firenze)

Paola Guglielmelli (Firenze)

Alessandra Iurlo (Milano)

Barbara Izzo (Napoli)

Roberto Latagliata (Roma)

Thomas Lion (Vienna)

Alessandro Lucchesi (Meldola)

Michele Malagola (Brescia)

Giovanni Martinelli (Meldola)

Donal McLornan (London)

Barbara Mora (Milano)

Olga Mulas (Cagliari)

Francesca Palandri (Bologna)

Giuseppe A. Palumbo (Catania)

Fabrizio Pane (Napoli)

Nicola Polverelli (Pavia)

Philippe Rousselot (Le Chesnay)

Domenico Russo (Brescia)

Giuseppe Saglio (Torino)

Susanne Saussele (Mannheim)

Simona Soverini (Bologna)

Giorgina Specchia (Bari)

Mario Tiribelli (Udine)

Anna Vedovati (Brescia)

Daniela Zizioli (Brescia)

Under the Patronage of



Con il Patrocinio di SIE  
Società Italiana  
di Ematologia



### ORGANIZERS

Domenico Russo, Giuseppe Saglio, Nicola Polverelli

### SCIENTIFIC COMMITTEE

Simona Bernardi, Michele Malagola, Alessandro Leoni

### E.C.M.

The Conference has been accredited by the Italian Ministry of Health:

Event n. 652-405010

Provider n. 652

10 ECM credits for n. 100 participants Physicians, Nurses, Biologists, TSLBs, Pharmacists

Each participant, to obtain ECM credits, must be present at least 90% of the scientific work and complete the online ECM questionnaire with a total of 75% of correct answers.

Attendance will be registered via barcode reader.

### CONGRESS VENUE

Centro Congressi Paolo VI  
Via Gezio Calini, 30  
25121 Brescia (BS)  
ITALY

### ORGANIZING SECRETARIAT



StudioProgress Snc  
Via Cattaneo 51  
25121 Brescia (Bs)  
Tel. +39 (0)30 290326  
E-mail info@studioprogress.it  
Web www.studioprogress.it

With the unconditional contribution of



# Second International "Michele Baccarani" Conference CML and Ph negative Myeloproliferative Disorders: Biological - Traslational - Clinical Features and Perspectives

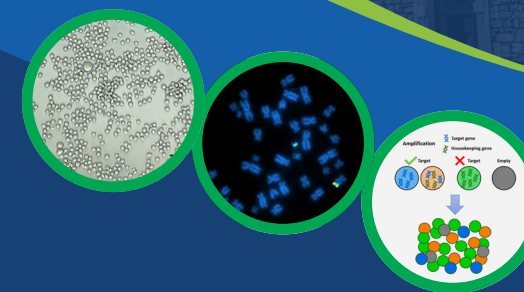
Centro Congressi Paolo VI  
Brescia, 22-23 Marzo 2024

### Organizers

D. Russo  
G. Saglio  
N. Polverelli

### Scientific Secretariat

S. Bernardi  
M. Malagola  
A. Leoni



## FIRST DAY 22 MARZO 2024

14.00-14.15 Presentation of the Meeting  
Giuseppe Saglio, Domenico Russo, Nicola Polverelli

### 14.15-15.45 Session 1 • CML Biology: What's new

Chairmen: Giovanni Martinelli, Giorgina Specchia

How searching Ph+ LSC (15 Min)

Monica Bocchia

Genetic instability of Ph+ LSC: primary vs secondary (15 Min)

Simona Soverini

Added value of next generation over Sanger sequencing to determine outcome after resistance to first line TKI therapy (15 Min)

Anna Vedovati

How monitoring BCR/ABL1 transcript (15 Min)

Simona Bernardi

How targeting Ph+ LSC (15 Min)

Daniela Cilloni

Zebrafish for testing efficacy and safety of TKIs (15 Min)

Daniela Zizioli

15.45-16.15 Coffee break

### 16.15-17.15 CML Session 2: Advances in CML treatment in Europe

Chairmen: Susanne Saussele, Fabrizio Pane

In Italy (20 Min)

Fausto Castagnetti

In France (20 Min)

Philippe Rouselot

In Germany (20 Min)

Susanne Saussele

### 17.15-19.30 CML Session 3: Moving to personalized CML treatment

Chairmen: Giuseppe Saglio, Domenico Russo

I Part

Is the survival reached for all CML patients - Discussants (20 Min)

Yes

Olga Mulas

No

Mario Tiribelli

What are the new objectives for CML pts? - Discussant (20 Min)

Cure

Fausto Castagnetti

Quality of Life

Michele Malagola

TFR for all? - Discussants (20 Min)

Yes

Carmen Fava

No

Alessandra Iurlo

Escalation for eradication - Discussants (20 Min)

Yes

Massimo Breccia

No

Mirko Farina

18.35

II part

Different drug and/or different strategies for different patients?

Clinical case 1 (adult 73yy low risk pt) - Discussant (15 min)

Massimiliano Bonifacio

Clinical case 2 (adult 37yy int risk pt) - Discussant (15 min)

Antonella Gozzini

Clinical case 3 (adult 56yy high risk pt) - Discussant (15 min)

Roberto Latagliata

Discussion

19.30

End of the first day

## SECOND DAY 23 MARZO 2024

### 09.00-10.30 Session 4 - Driving the future in CML Therapy

Chairmen: Susanne Saussele, Giuseppe Saglio

Combinatorial treatment options for highly resistant BCR::ABL1 compound mutations (20 Min)

Thomas Lion

Reduction of TKI dosage in maintenance therapy (20 Min)

Michele Malagola

What do we have to fear as Long term Toxicity? (20 Min)

Carlo Gambacorti Passerini

What is new in ELN guidelines 2024 (20 Min)

Jane Apperley

Discussion

10.30-11.00 Coffee Break

### 11.00-11.45 Session 5 - News from Labs

Chairmen: Giovanni Martinelli, Simona Bernardi

New diagnostic and prognostic tools (20 Min)

Sara Galimberti

How to move from RTq-PCR to dPCR Labnet (25 Min)

Enrico Gottardi and Barbara Izzo

Discussion

### 12.00-13.00 Baccarani Lecture • CML: the story's not over yet!

Jane Apperley

13.00-14.30 Lunch Break

### 14.30-15.30 Session 6 - Myelofibrosis: the route to cure

Moderator: Donal McLornan, Nicola Polverelli

2024 updates on risk stratification and medical treatment options (15 Min)

Francesca Palandri

New drugs and integrated approaches: is there a need for novel outcome measures? (15 Min)

Giuseppe A. Palumbo

Role of transplant in MF in contemporary years: who and when (15 Min)

Nico Gagelmann

The importance of cooperative studies: the experience of the Chronic Malignancies Working Party of the EBMT (15 Min)

Donal McLornan

### 15.30-16.30 Session 7 - Evolving landscape in Ph- MPNs

Moderator: Nico Gagelmann, Domenico Russo

MPNs: an example of inflammatory disease (15 Min)

Alessandro Lucchesi

New biological insights into the pathogenesis and progression of MPNs (15 Min)

Paola Guglielmelli

Current management and unmet needs in ET and PV (15 Min)

Barbara Mora

16.30 End of second day

